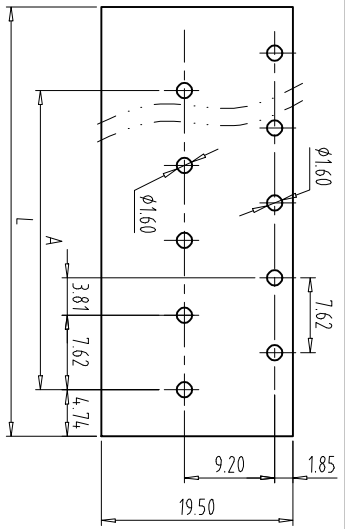
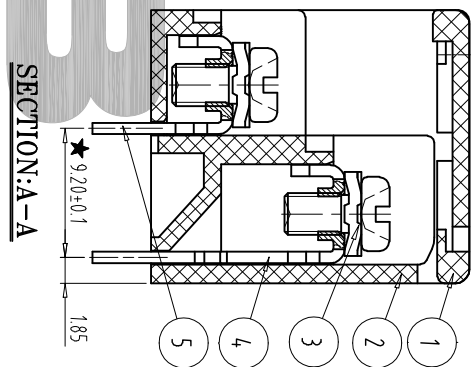
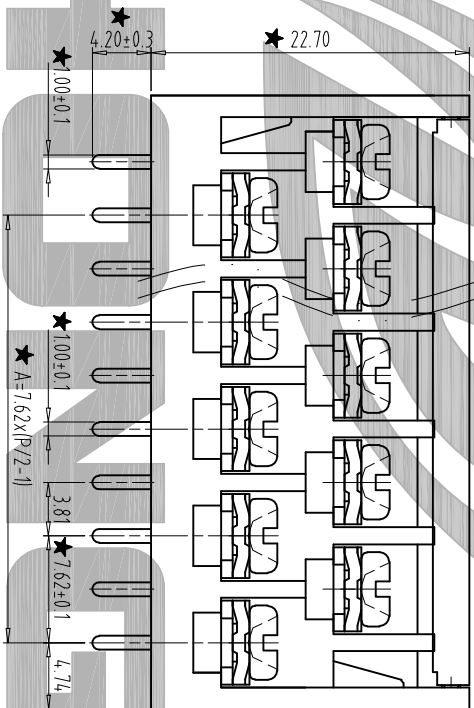
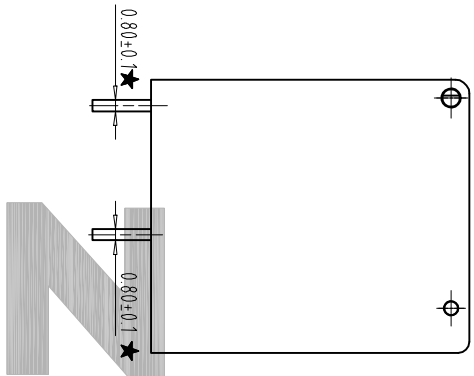
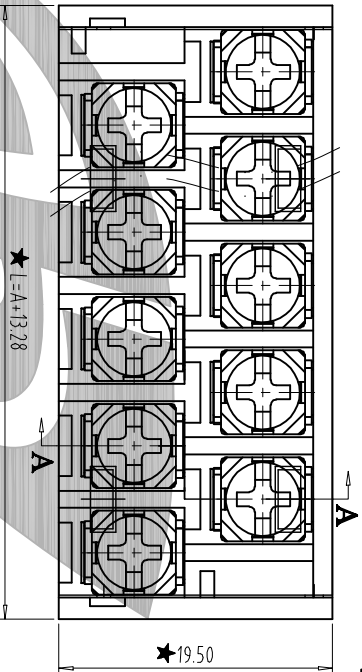


FILE	ZB02/
------	-------



PCB LAYOUT
S=1.4:1



- NOTES:
1. Rating 300V 15A;
 2. Insulation Withstands Voltage: AC2000V/1MIN
 3. Insulation Resistance: 50MΩ or more at DC500V
 4. Using Temperature Range: -40°C/+105°C
 5. Screw Torque Value: 0.6Nm
 6. Suitable Electric Wire: 14-22AWG
 - 7, "★" the important dimension.

REV	CONTENT	CHK	DATE
V0.0	CONTENT	SK	2014/11/05

Dim	4	6	8	10	12	14	16	18	20	60
L	20.90	28.52	36.14	43.76	51.38	59.00	66.62	74.24	81.86	***
A	7.62	15.24	22.86	30.48	38.10	45.72	53.34	60.96	68.58	***

Total Pitch Tolerances		Nominal dimension range	
In mm		In mm	
over	to	over	to
0	30	0	30
30	53	30	53
53	70	53	70
70	90	70	90
90	115	90	115
115	150	115	150
150	250	150	250
250	350	250	350
350	500	350	500
500	30	500	30
30	53	30	53
53	70	53	70
70	90	70	90
90	115	90	115
115	150	115	150
150	200	150	200
200	250	200	250
250	320	250	320
320	10	320	10
10	all	10	all
all	100	all	100
100	150	100	150
150	over	150	over

5	SOLDER PIN	ZD202B0001	P/2	BRASS	Tin Plated
4	SOLDER PIN	ZD202B0002	P/2	BRASS	Tin Plated
3	SCREW	ZBS10003	P	STEEL	M3/Ni Plated
2	HOUSING	ZD202A1XXXX	1	PA66	/
1	COVER	ZD202A3XXXX	1	PC	/

ITEM	NAME OF PART	NO. OF PART	Q'TY	MATERIAL	NOTE
DWG	SK	DATE	2014/11/05	SIZE	A4
CHK	DATE	SCALE	2:1	UNITS	mm
APP	DATE	NAME	ZBD202C-XP-XC	SHEET/OF	1/1



NINGBO ZHONGBO PHOTOVOLTAIC TECHNOLOGY CO., LTD